



Cut & Loop



Broadloom

LABELLE II

UC FLOOR

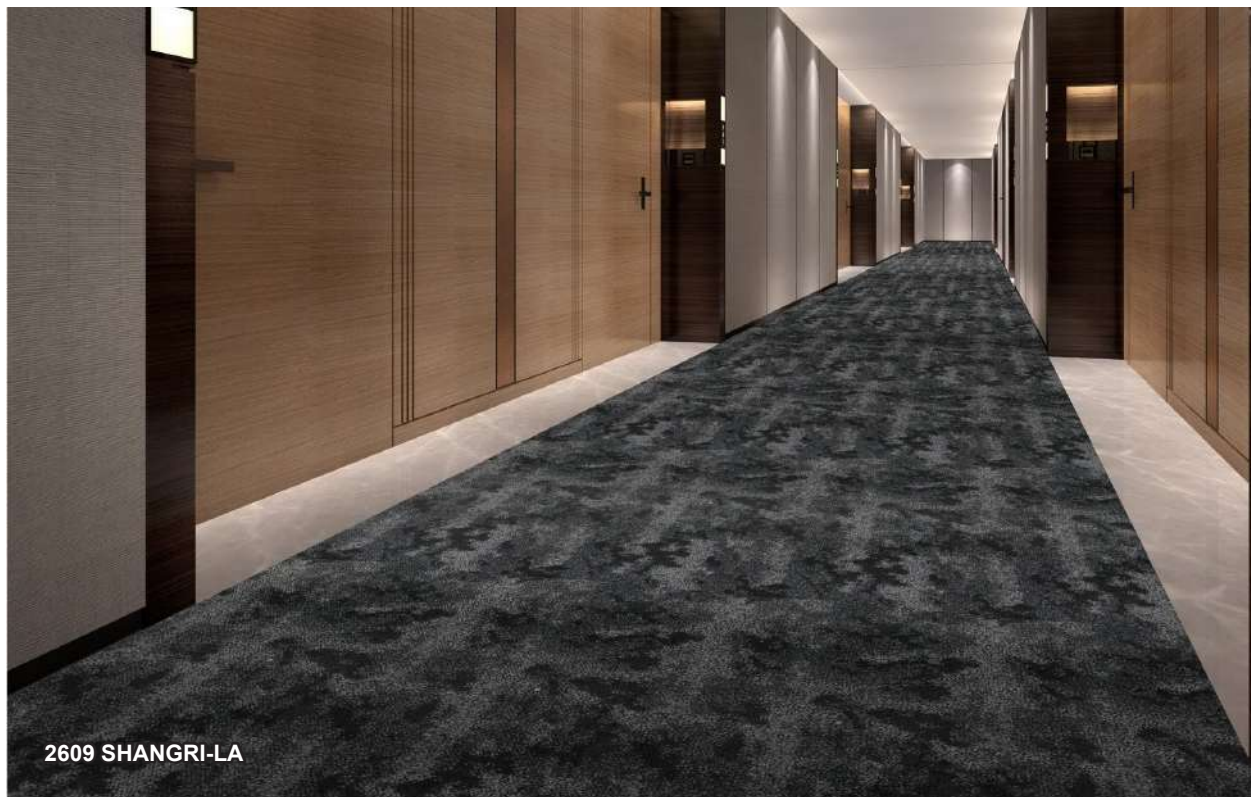


2609 SHANGRI-LA | PATTERN REPEAT: 36.6CM X 96CM

CORRIDOR



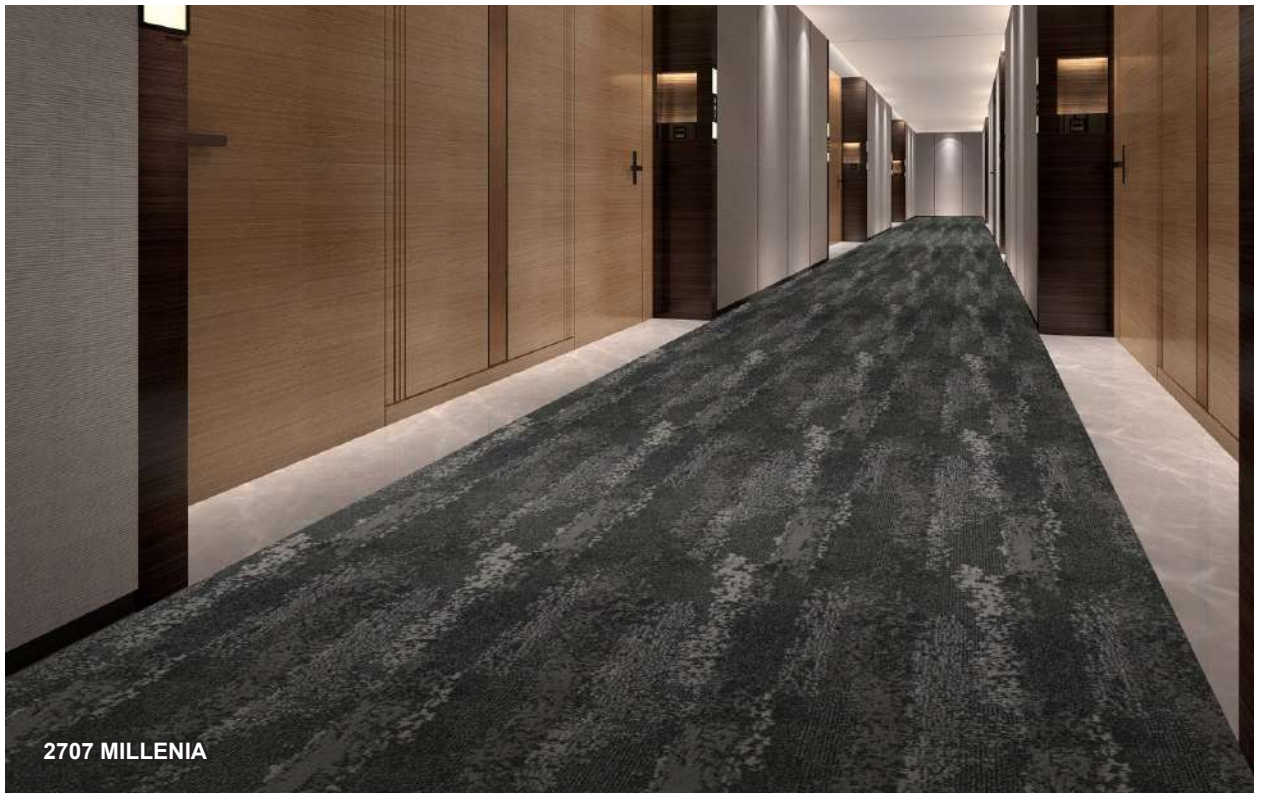
2602 PARK ROYAL



2609 SHANGRI-LA

Please note: Images are for illustration only, there may be slight color difference between the picture and actual carpet. Slight color variation may occur from dye lot to dye lot.

PATTERN REPEAT: 36.6CM X 100CM



Kindly check stock availability with us before confirming the order.

SEMINAR ROOM



Please note: Images are for illustration only, there may be slight color difference between the picture and actual carpet. Slight color variation may occur from dye lot to dye lot.

PATTERN REPEAT: 36.6CM X 100CM



Kindly check stock availability with us before confirming the order.

GUEST ROOM



Please note: Images are for illustration only, there may be slight color difference between the picture and actual carpet. Slight color variation may occur from dye lot to dye lot.

PATTERN REPEAT: 36.6CM X 100CM



Kindly check stock availability with us before confirming the order.



2707 MILLENIA (REPEAT: 36.6CM X 96CM)



2602 PARK ROYAL
REPEAT: 36.6CM X 96CM



2702 PACIFIC
REPEAT: 36.6CM X 100CM



2605 REGENT
REPEAT: 36.6CM X 96CM



2704 EXCELSIOR
REPEAT: 36.6CM X 100CM



2609 SHANGRI-LA
REPEAT: 36.6CM X 96CM



2707 MILLENIA
REPEAT: 36.6CM X 100CM

LABELLE II Specifications

Construction	Tufted Cut & Loop Pattern
Yarn Composition	100% Solution Dyed Nylon, 2-Ply Heatset
Pile Weight	Ca. 1085 g/m ² (32 oz/yd ²)
Total Weight	Ca. 1870 g/m ² (55.14 oz/yd ²)
Pile Height	Ca. 6.5 mm (+/- 0.3 mm)
Total Height	Ca. 8.5 mm (+/- 0.3 mm)
Density	4500
Primary Backing	PP Woven Cloth
Secondary Backing	ActionBac®
Standard Roll Size	3.66 m x 30 m

Performance (as tested by ITTS Inc. USA)

Stain Resistance	3 (AATCC-175-2003), 3M Scotchguard Treatment
Static Control	Built-in Permanent
Tuft Bind	5.4 lbs (ASTM-D-1335)
Dimensional Stability	Pass - Max. 0.2% change (AACHEN)
Indoor Air Quality	CRI Green Label Plus No. GLP1350
Flammability	
Radiant Panel	Pass - Class II (ASTM-E-648)
Pill Test	Pass - 8 (ASTM-D-2859-06)
US Federal Flammability Std	Pass (GB20286-2006/C _n -s1 TO), (ASTM-D-2859-96)
Smoke Density	Pass - Max. 450 (ASTM-E-662-06)
Colourfastness	
to light	Excellent - 5 (AATCC-16E)
to wet & dry cleaning	Excellent - 5 (AATCC-165)
to ozone	Excellent - 5 (AATCC-129)

Warranties

10 Year Commercial And Hospitality Carpet Wear Warranty
Lifetime Antishock Carpet Warranty

Ideal for Medium and Heavy Hospitality use in Hotel Suite Rooms,
Hotel Corridors, Offices, Restaurants, Retail Outlets, etc

The subfloor should be dry, smooth, flat, dust-free and resistant to
compression and load-bearing. Where seaming is necessary, a seam sealant
must be used for all such installations. Due to dye lot variations, actual
material may vary slightly from the samples.
Chair pads are recommended to prevent premature
wear of carpet.



Level Cut
& Loop



Broadloom



Elegance & Comfort in Modern Living